

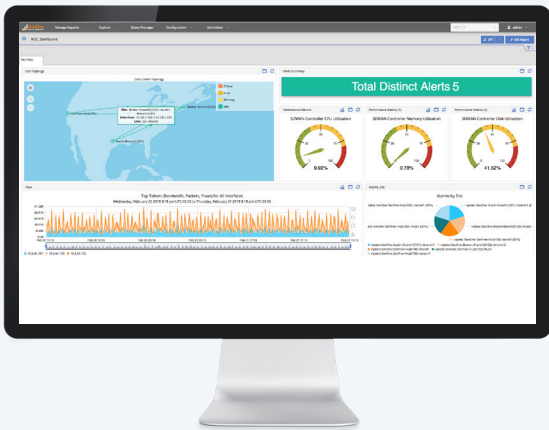
[At-A-Glance]

SEVONE SD-WAN MONITORING SOLUTION FOR MSPs

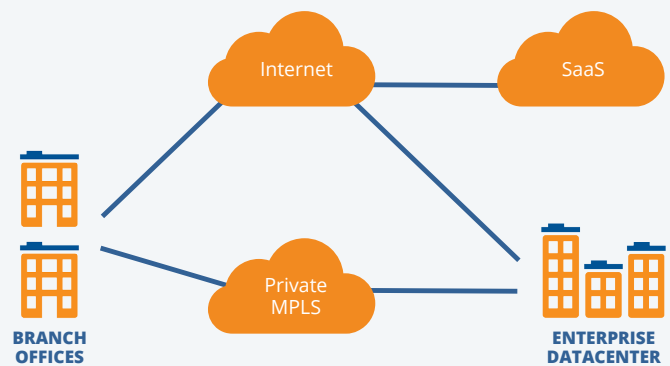
As Managed Service Providers (MSPs) offer multi-vendor, next generation SD-WAN services to meet the agility, efficiency and reliability needs of their customers, management systems must be put in place to help them visualize the performance of the new SD-WAN, but also the value-added services running across these new networks.

The market transition to SD-WAN helps MSPs by automating the installation and configuration process, so a WAN service can be installed more quickly. A correctly deployed SD-WAN increases availability and reliability metrics, and helps ensure that the MSP meets all of its SLA agreements. Transitioning to SD-WANs will not come overnight, creating a hybrid environment, requiring the use of multiple tools and operational processes to monitor both the existing legacy WAN and the new SD-WAN infrastructure.

The SevOne SD-WAN Monitoring Solution 2.2 delivers MSPs real-time and historical visibility into their network. With customizable, persona-based dashboards for network operations/engineering, product owners and business executives, MSPs can easily extend the solution for visibility across their entire service delivery path including enterprise wi-fi from campus to branch, software defined datacenters and more. With the ability to create customized KPIs based on specific tenants, WAN paths and health indicators of their multi-vendor-based SD-WANs, MSP network operations and engineering teams now have greater insight into the network services running on them, helping ease MSPs transition from offering MPLS-based services to new hybrid SD-WAN-based services.



VISIBILITY ACROSS THE SD-WAN



MITIGATE RISK.

Mitigate risk during the transition from legacy WANs to SD-WAN

VALIDATE POLICIES.

Validate your SD-WAN policies perform as planned

ONE DASHBOARD.

Troubleshoot your new hybrid WAN from one dashboard

KEY BENEFITS OF THE SEVONE SD-WAN MONITORING SOLUTION:

- **Ease the Transition to SD-WANs** – Monitor existing traditional MPLS WAN and new software-defined WAN from the same dashboard. Also, automatically monitor your new SD-WAN infrastructure as soon as it's deployed.
- **Automated Path & Class Data Correlation** – Automated, dynamic and correlated analysis of Cisco (Viptela) and Versa SD-WAN controller data to easily visualize what traffic was transmitted at what class and path as assigned by the SD-WAN controller.
- **Extensibility** – Extend visibility to other critical network assets across their customers' networks such as enterprise campus and branch office wi-fi, software defined data centers, public cloud and more.
- **Service Level Insight** – Understand how infrastructure performance affects the customer's applications and services with user configurable single tenant and multi-tenant dashboards with service level insight.
- **Business Alignment** – Leverage customizable persona-based dashboards and KPIs that align to specific roles in managed services providers, including: network operations/engineering, product owners and business leaders.
- **Provide Flexibility** – Modify any of the solution's dashboards to easily create and share MSP-specific dashboards, then stitch them together as workflows across multiple MSP teams to better fit into their operational model.

BROAD INDUSTRY SUPPORT

The SevOne SD-WAN Monitoring Solution supports the existing WAN infrastructures deployed today from Cisco, Huawei, Juniper, Nokia/ALU, and more along with the SD-WAN offerings from Cisco SD-WAN, Versa, Silver Peak and Nuage. Additional vendor support can be extended through the open APIs of the SevOne Data Platform with the help of SevOne Professional Services.

SD-WAN MONITORING SOLUTION STARTER KIT

To help managed services providers and enterprises mitigate the transitional risk of moving from legacy WANs to SD-WANs, SevOne is now offering the SevOne SD-WAN Monitoring Solution Starter Kit.

Delivered as a single integrated package, this starter kit this starter kit contains the SevOne software to monitor up to 100 fully-meshed WAN sites. Actual coverage may vary based on your specific SD-WAN implementation. This starter kit can be easily extended for complete visibility of larger SD-WAN deployments and other networking and network services devices throughout your campus and branch office network.

PROFESSIONAL SERVICES, SUPPORT AND TRAINING

SevOne offers a complete set of services to help your organization make the most of your SD-WAN investment, including:

QuickStart for SevOne SD-WAN Monitoring Solution Starter Kit

- Ensure your SevOne SD-WAN Monitoring Solution Starter Kit is successfully implemented to meet your requirements

Post Implementation Services

- Engage with SevOne Professional Services for the life cycle of your project with a range of Business and Platform Optimization Services

Custom Integration

- Integration with your existing tools and solutions based on customer specific requirements

Gold and Platinum Maintenance

- A full suite of services from eSupport, Software Updates, 7x24 Technical Customer Assistance, 10-Day New Device and Log Certifications and more

Customer Training

- Increase your team's effectiveness and on-going success with customer training sessions led by SevOne experts

WHAT KEY PERFORMANCE INDICATORS MATTER AND WHY?

Leveraging one or more SevOne Data Collectors for SD-WAN, this Solution collects and analyzes a series of multi-vendor key performance indicators (KPIs) enabling users to:

- Learn business application usage and asset utilization (for cost savings analysis)
- Understand SD-WAN policy impact on applications
- Monitor events and identify root cause of the factors leading to the event
- Mitigate issues by providing actionable data to correct problems
- Create customized, aggregated KPIs of your SD-WAN service by tenant, path & more

These outcomes are based on the collection of metric and flow data from the SD-WAN infrastructure including:

- **WAN KPIs**
Utilization, latency, jitter, availability, packet loss
- **Path Details**
Site-to-Site activities
Site application activities

GET STARTED WITH SEVONE:



+1.302.261.8718



info@sevone.com



www.sevone.com